



wallow

# UPSCALE

PHOTOSHOP AI ACTION

HELP FILE

*Photoshop Add-ons Instruction Guidebook*

**Thank you for Downloading!**

## **IMPORTANT!**

### **PLEASE WATCH DEMONSTRATION VIDEO BELOW**

The video below will demonstrate how to use the action and how to customize the artwork. The video covers some important techniques that you will want to use after the action has finished.

**CLICK HERE TO WATCH THE VIDEO TUTORIAL**

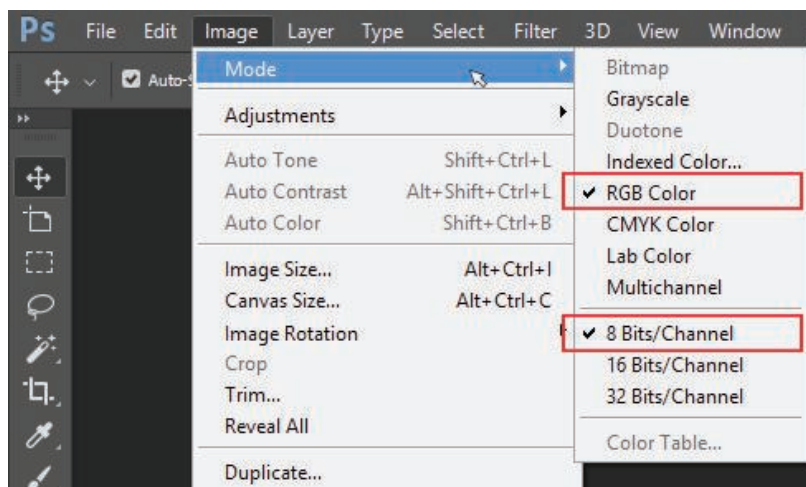
<https://youtu.be/pcjRjp5s9rE> 

This action has been tested and works perfectly in **Photoshop Beta 2025**. It is not compatible with older versions of Photoshop.

# STEP BY STEP GUIDE

## *How to SETUP*

- 1, Open your image in Photoshop
- 2, Set image mode to **RGB color** & **8 Bits/Channel**.

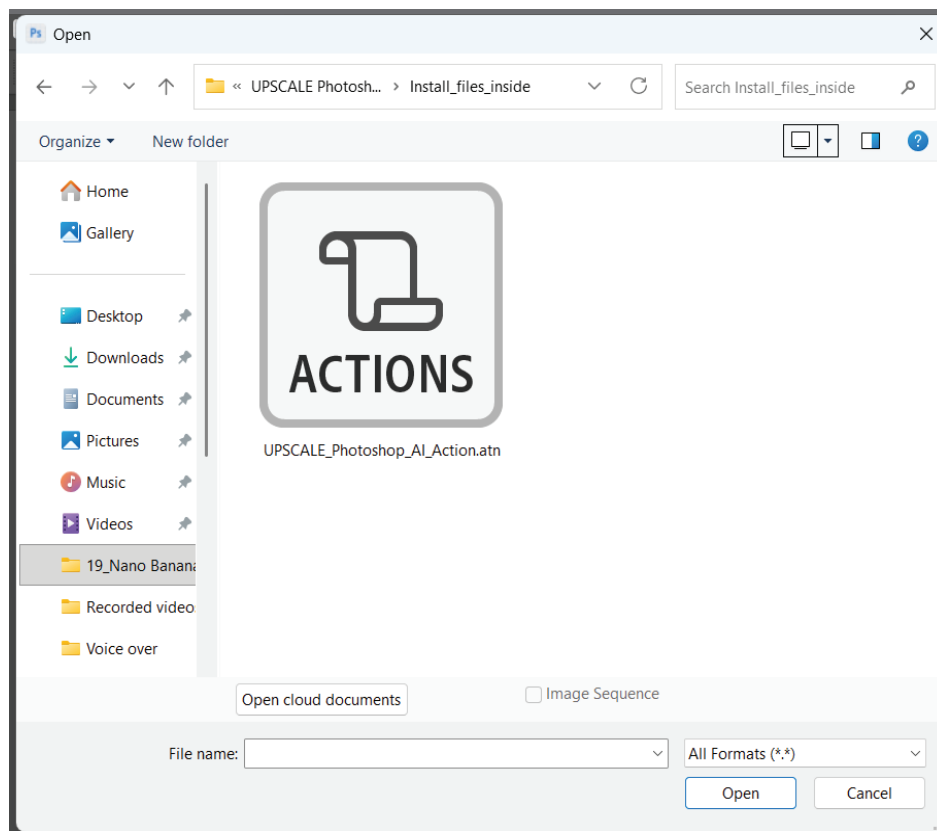


- 3, For the best results, use photos less than 2,048px size.

# How to *INSTALL*

4t, Install Action files.

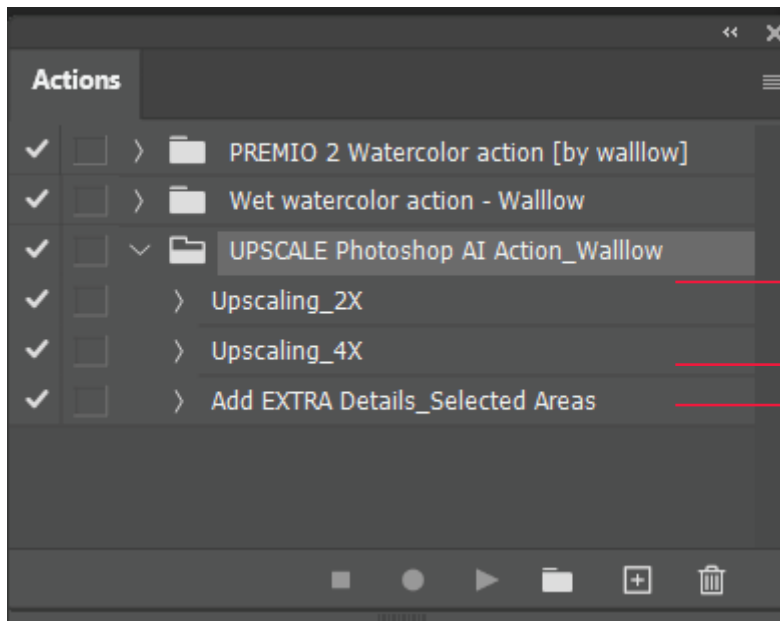
- a) Inside Photoshop, go to the File > Open...
- b) Inside the Open window, navigate to the **UPSCALE Photoshop AI Action** folder which you downloaded.
- c) Navigate inside the **Install\_files\_inside** folder
- d) Select following file - **“UPSCALE Photoshop AI Action.atn”**
- e) Click **Open** to load files in **Photoshop**.



## How to *PLAY* ACTION

5, Open Action panel by going to **Window > Actions**.

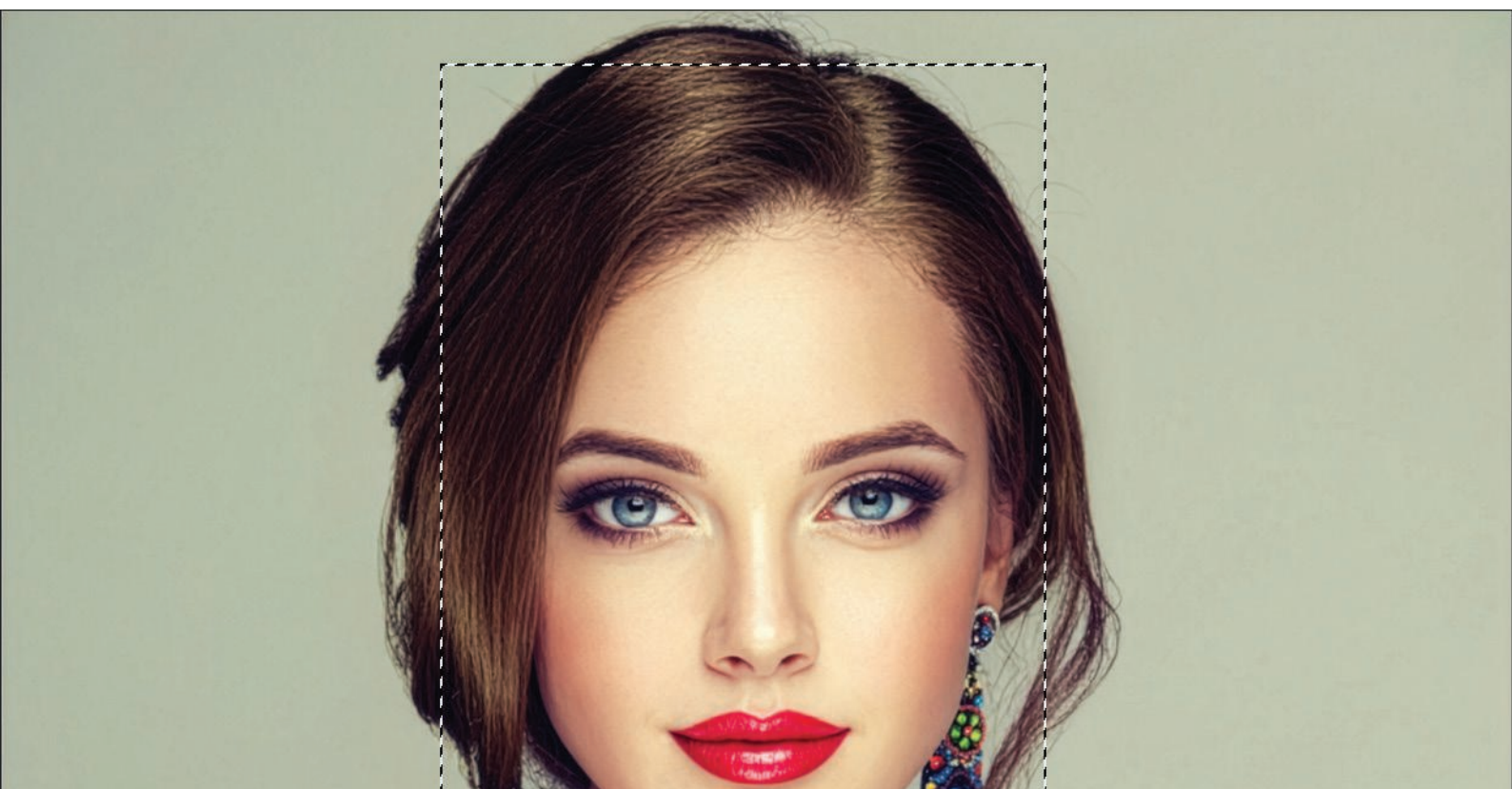
Now select the “**Upscaling\_2x**” or “**Upscaling\_4x**” action and click **Play**.  
(Photoshop Beta currently supports upscaling only up to 4096px).



Upscale actions

(Before running this action, make sure to select a small area of the image — for example, the face.)

6, After playing Upscaling action, play the action “Add EXTRA Details\_Selected Areas”. Before running this action, make sure to select a small area of the image — for example, the face.



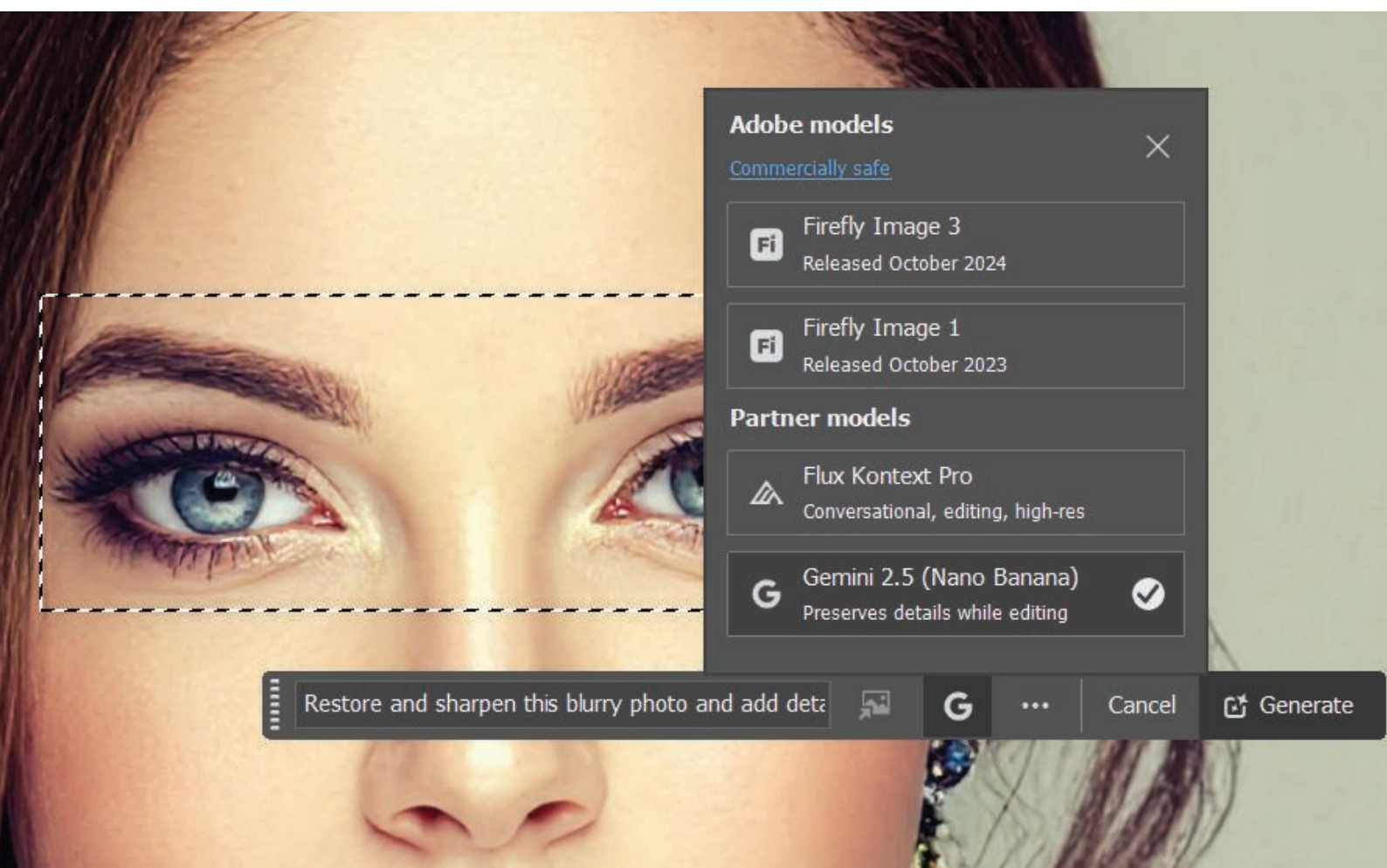


7, Now we've completed the action, and the image has been successfully upscaled. However, if you want to add hyper-realistic details and textures to specific areas of the image, move to the final step — the secret weapon: Nano Banana AI. This is where things get crazy good.

Let's select a small part of the image and use below prompt:

*prompt:*

**"Restore and sharpen this blurry photo and add details, HD quality, high resolution."**



If you don't see the Contextual Task Bar, go to Window, Contextual Task Bar to enable it.

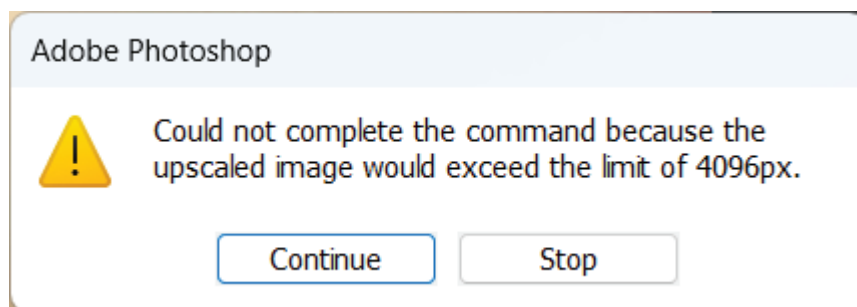
Then, paste the prompt, select Gemini 2.5 (Nano Banana), and click Generate.

You may need to try a few times to get the best result.

If you notice sharp edges around the borders, simply mask them — just like shown in the video tutorial.

## Frequently Asked Questions

9, Why do I get below error message when I run the “Upscale\_4x” action?

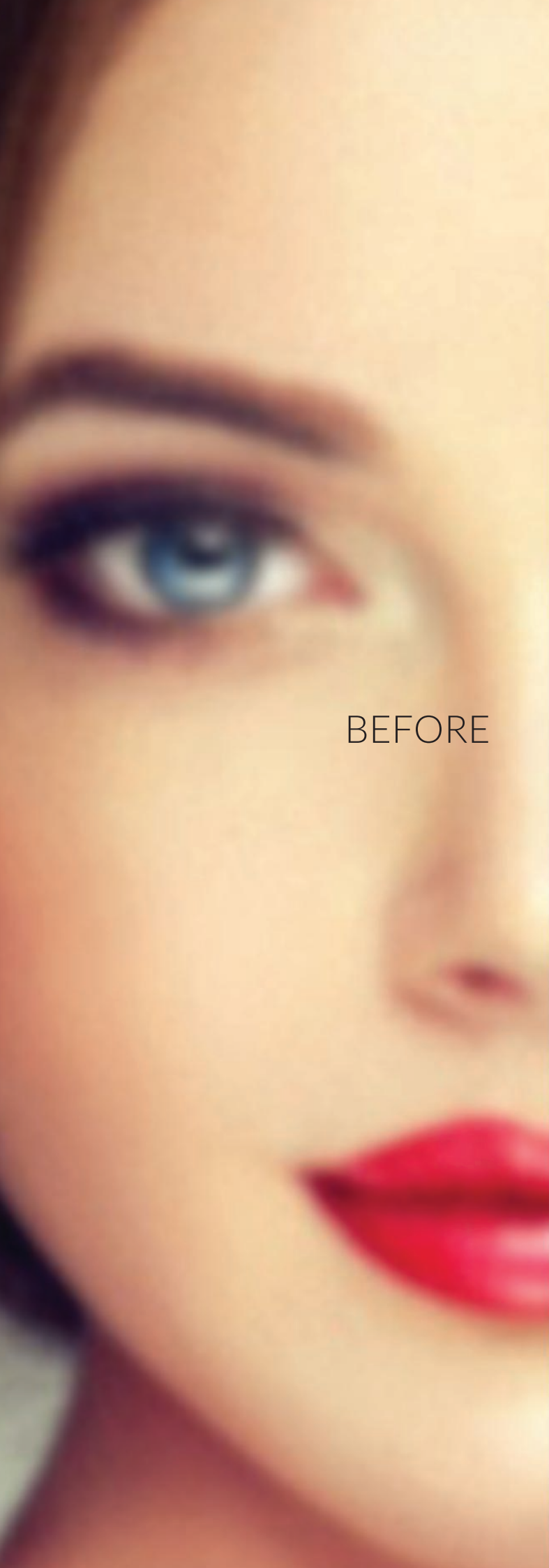


**Answer:**

Photoshop Beta currently supports upscaling only up to 4096px. If your image is already large, a 4x upscale may exceed this limit — that’s why the error appears. Try using the Upscale\_2x action instead; it will work smoothly.

Please refer to the video tutorial if you need assistance with these steps.





BEFORE



AFTER

## NEED HELP?

Please message us or email to  
[wallowso@gmail.com](mailto:wallowso@gmail.com)

Unlimited Downloads from \$11.99/Month



## Thank You & Warm Hugs!

We are truly grateful for your presence in our creative journey. Our purpose is to *empower creative people*.

GET UNLIMITED DOWNLOADS

## LEARN AI Photo Editings Tricks

For the latest AI video tutorials and freebies, check out our YouTube channel below.



walllow.com

